

Exploitable results:

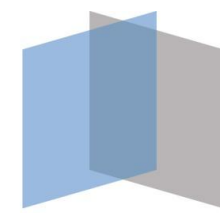
Fleet Management Platform for Machine Tools

A cloud based fleet-wide platform for machine tool condition, performance analysis and proactive maintenance has been developed.

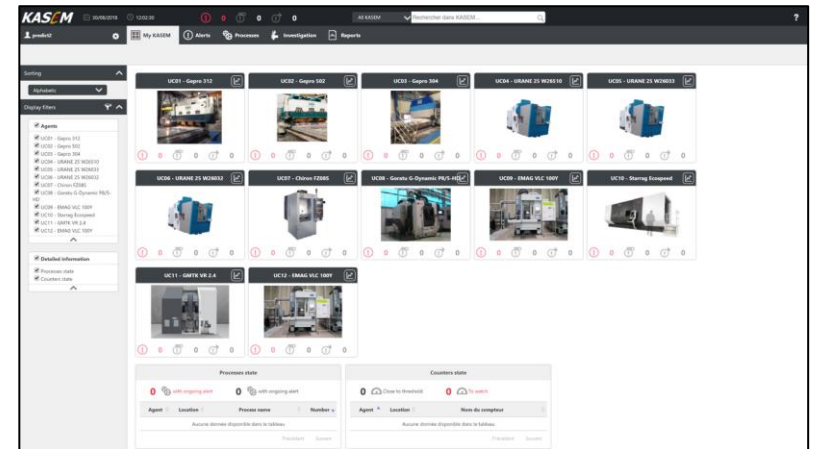
The KASEM[®] platform, provides an easy-to-use interface, allowing creation of algorithms and visualization of the evolution of indicators or the generated reports.

The solution provides:

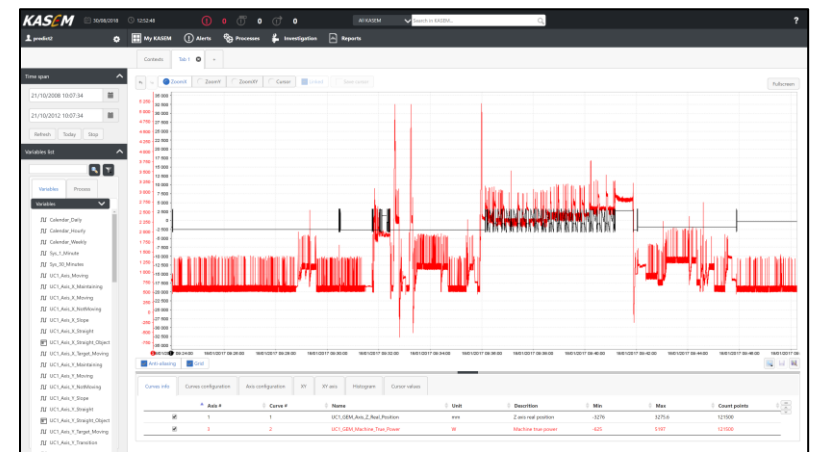
- More than 60 KPIs for the health status of machine-tool and its sub-systems: axis, spindle, magazine, hydraulic group, clamping systems, cooling systems, ...
- An accurate and dynamic diagnostic tool thanks to a root-cause analysis and modelling of physics
- Additional indicators obtained by the implementation of the Quick Machine Tool Characterization tests developed in Twin-Control
- Integration of Remaining Useful Life (RUL) calculation of critical components based on real usage conditions.



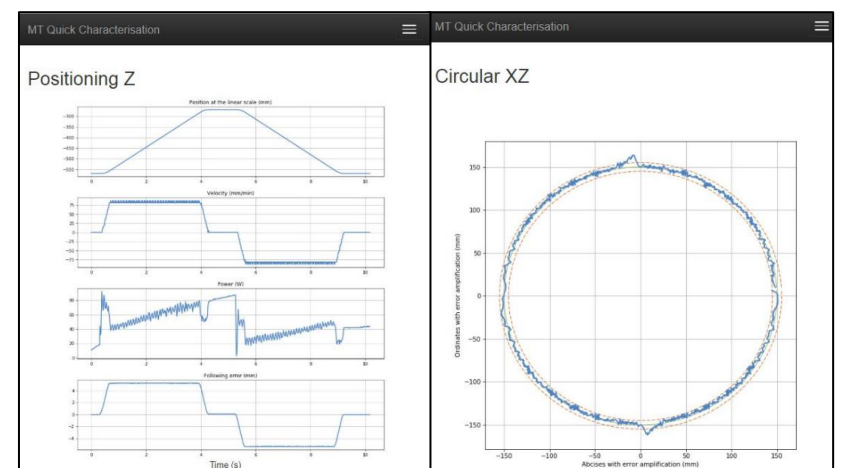
twincontrol



Twin-Control portal



Indicator visualization



Machine Tool Characterisation Test report

Impact

- Reduction of **30 %** in corrective maintenance costs
- Increase in machine up-time (**2-4 %**)



G.A.: 680725
twin-control.eu
@twin_control



IK4  TEKNIKER
Research Alliance